

REHABILITATION

Bure XL Electric Stand Tall Walker



Bure XL Electric StandTall Walker

The Bure XL is designed to accommodate bigger, heavier patients and therefore provides extra space and strength. Because extra powerful aids are required in the care and nursing of heavier patients, Bure XL is always supplied with electric drives.

Ergonomic handles

The ergonomically designed handles are steplessly adjustable in every direction for optimum individual adaptation. This is extremely important for stroke patients who can thus reach their "usual" hand position.

Easily reachable hand controls

The hand controls are located such that both of the carer's and user's hands can easily reach them.

Power Rise

Bure XL provides excellent assistance when helping patients and users stand. Personnel burdens, and thus repetitive strain injuries, are minimized. Depending on their current condition, a number of patients are even able to stand up by themselves using the power rise feature.

Open design

The open design provides the same stability but with greater room for manoeuvre. The patient does not feel shut in and it makes assistance with standing up and dressing easier.

Waterproofing

All Bure XL electrical components have IP 66 international protection ratings and can occasionally be used in damp areas.

Sustainable

The Bure XL StandTall Walker is designed to last a long while. For example, it has an extra reinforcement band around the armrest cushions to prevent splitting from side impacts.

Stable

The Bure XL StandTall Walker has anatomical cushions that provide relief for shoulders, arms and the neck and shift the focus to larger muscle groups such as leg and chest muscles instead. This improves stability and makes the walker easier to steer.

Flexible stepless adjustment

Electrically driven height adjustment makes it easy to preset the Bure XL StandTall Walker to the desired height. Once the patient is standing in position the height can be steplessly adjusted for best comfort and optimal walking support.

240kg
SWL

Designed for weight

The Bure XL is designed to provide support for heavier patients who weigh up to 240 kg. This StandTall Walker has also been widened to provide good stability and plenty of space. The inner dimension is 44–62 cm. The extra legroom makes it especially easy for patients who need extra walking space due to e.g. leg spasms.



REHABILITATION

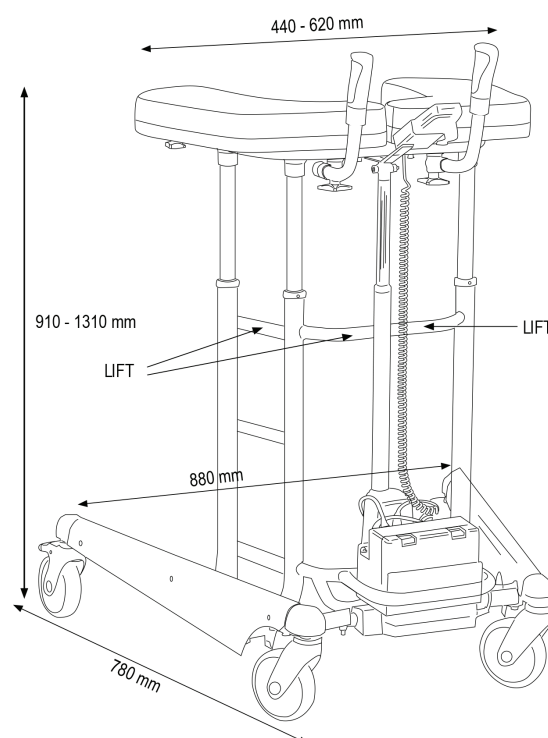
Bure XL Electric Stand Tall Walker



Product code	Product name
RHGA-56-315	Bure XL Electric StandTall Walker

TECHNICAL SPECIFICATIONS

Max. user weight	240 kg
Width	88 cm
Length	78 cm
Height	91-131 cm
Armrests/internal dimension	44-62 cm



ACCESSORIES



Brake Kit Twin

Adds a hand brake so that the user is able to halt movement during walking exercises.

RHGA-56-315-0



Platform - Steel

A flexible alternative when moving a patient a short distance.

RHGA-56-386



Drip Stand with Attachment

Creates great ability for a patient to move freely in a room, on the ward or at home.

RHGA-56-338



Oxygen Bracket

Means that a patient is no longer confined to the bed.

RHGA-56-336



Side Support

Prevents arms from sliding from armrest cushions and stabilise walking.

RHGA-56-337



Soft Basket

Basket with attachment has enough room for all the important stuff.

RHGA-56-389



Stirrup

Stand Tall Walker Part/Accessory: Stirrup

RHGA-56-331-1



Castors with brake (various sizes)